

Farm Guide of Utsunomiya University



The Farm at Utsunomiya University was established in October 1922 as an attached facility of the agriculture faculty to support the university's research and education in field science. It is located in the city of Moka in Tochigi prefecture, and the farm consists of 102 hectares. We have four areas—crop science, horticultural science, livestock science, and agricultural engineering. 4 teaching staffs, 5 secretary staffs, and 15 technical staffs provide students with academic opportunities to learn about food, agriculture, health, the environment, and life sciences.



宇都宮大学農学部附属農場

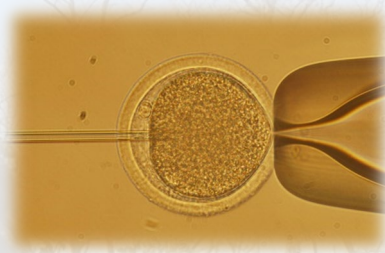
Facilities and Equipment

We have one management building for education and research, one guest house for students, and many fields in each of the four areas for education, research, and production. In the crop science area, we have rice paddies and fields for soybean, wheat, barley, and corn. In the horticultural science area, we have orchards (for grapes, Japanese pears, apples, and so on), vegetable fields (for cabbage, tomato, onions, carrots, and so on), and greenhouses. In the livestock science area, we have two tie-stall barns for 30 dairy cattle (Holstein) and 30 beef cattle (Japanese black), one free-stall barn for 30 sheep, as well as grazing pastures and fields for dent corn and hay. In the agricultural engineering area, we manage a rice transplanter, a multipurpose combine, tractors, and so on.



Research Activities

Four research laboratories of Utsunomiya University's faculty of agriculture are located at the University Farm: the Laboratory of Crop Science, the Laboratory of Horticultural Science, the Laboratory of Animal Production and Reproduction Science, and the Laboratory of Farm Work Environmental Engineering. These laboratories accept both undergraduate and graduate students of Utsunomiya University who are doing scientific research in pursuit of a degree.



Educational Programs

All students of the Utsunomiya University faculty of agriculture must take a hands-on agricultural program at the University Farm as a required subject. This educational program consists of many fields of agriculture: field crop science, horticultural science, animal science, agricultural engineering, and so on. Through this program, students acquire basic skills and knowledge in field science. Since 2010, we have offered these hands-on agricultural programs to other university students in various academic fields as part of the national Center of Excellence in field science.



Agricultural Products

In addition, some of our products and processed goods are for sale, and you can buy them at Utsunomiya University and at local festivals around Utsunomiya and Moka city. A rice variety called "Yudai 21", which was developed on our farm, is one of the most popular agricultural products. We also sell dairy products (milk, fresh cheese, butter, and cheesecake) which are made from high quality raw milk from our cattle. We also sell wine from our grapes, shochu from our barley and sweet potatoes, and amazake from our fermented rice.



Access and Location

Utsunomiya University is located approximately 100 kilometers north of Tokyo in the city of Utsunomiya, while the University Farm is located Moka city, adjacent to Utsunomiya. The traveling time from Utsunomiya to Tokyo is about 50 minutes by the Tohoku Shinkansen train. It takes approximately three hours to reach Narita Airport by limousine bus on the expressway. Notable sites near Utsunomiya that attract many tourists include Nikko, designated as a UNESCO World Heritage site, Kinugawa Hot Springs, and the Nasu resort area.



Farm of Utsunomiya University

443 Shimokomoriya, Moka, Tochigi, 321-4415, Japan

TEL. +81-285-84-2424

Email fuznoujy@miya.jm.utsunomiya-u.ac.jp

<http://agri.mine.utsunomiya-u.ac.jp/>

